



**WELDLINE™**  
by Lincoln Electric

# 1 PERSONAL PROTECTION EQUIPMENT

## PROTECTION

- ◆ LCD welding filter ..... 7
- ◆ Electronic helmets ..... 8 to 18





Euro ONE

WELDLINE  
by Lincoln Electric



# DO YOU OFFER YOUR WELDERS THE BEST POSSIBLE PROTECTION?

**WELDLINE™**  
by Lincoln Electric

## THE RISKS

### FACE & EYES

90% of all workplace eye injuries are preventable with the use of proper safety eyewear, welding goggles and helmets.

Only 1% of approximately 770 workers suffering face injuries were wearing face protection.

### BODY

Every day, people are admitted to burn centers annually with severe arc flash burns.

### HAND AND FOREARM

25% of all work place accidents involved hands and fingers

### LEGS

Risks of clothes catching fire from welding spatter and molten metal.

### FEET

Risks are perforations, falling object, burns and slipping.

## THE SOLUTIONS

### WELDING HELMET & SAFETY GLASSES

Electronic helmet allow the welder to be immediatly and automatically protected during the welding operation. A pair of safety glasses gives additional protection against i.e. grinding particules.

### WELDING JACKET

Welding jacket of flame retardant material of leather to protect the upper body, against welding spatters, grinding particles which permit to avoid burns.

### WELDING APRON

Welding apron in premium grade, split or grain leather will protect clothes from welding spatters and grinding particles.

### GLOVES & SLEEVES

The choice of welding gloves will depend on the welding application in order to offer the right protection and comfort. Sleeves over the jacket offer an additional protection of the arms.

### TROUSERS

Trousers of flame retardant material to protect the lower body against welding spatters, grinding particules and molten metal.

### SHOES & GAITERS

Leather shoes or boots wire safety be protection for best foot protection.. Combine the welding shoes with gaiters permit to protect completely the bottom of the leg.



Weldline by Lincoln Electric, more comfort and safety for welders.  
Discover our offer of quality products at [www.weldline.eu](http://www.weldline.eu)



All products have to be in accordance with EU standards and the CE marking is mandatory:  
**EN 175**

# HELMETS

## Choice of head protection

An **electronic helmet** allows the welder to be immediately and automatically protected when the welding operation begins.

**The result is a better efficiency, a better comfort, and at least a better result.**

Electronic helmets exist with fixed or variable shade.

The choice depends on the welding process.



	EUROONE	EUROSPEED LS	CHAMELEON 4V LS	EUROLUX 4500 LS	GOLDENARK LS	ZEPHYR 4500 LS FLIP-AIR 4500 LS
To order	W000403823	W000403824	W000403668	W000403672	W000403673	W000403674 W000403675
For welding process	MMA, MIG MAG	MMA, MIG MAG, TIG	Every welding process, especially for TIG	Every welding process	Every welding process	MMA, MIG MAG
Optical class	1/1/1/2	1/1/1/2	1/1/1/2	1/1/1/2	1/1/1/2	1/1/1/2
Lens switching speed	0,06 ms	0,04 ms	0,05 ms	0,04 ms	0,05 ms	0,04 ms
Lens shade	3.5/9-13	3.5/9-13	3/8-13	3/8-13	3/8-13	3/8-13
Independent sensors	2	2	3	4	4	4
TIG Amp Rating	>= 10A DC & >= 10A AC	>= 5A DC & >= 5A AC	>= 5A DC & >= 5A AC	>= 5A DC & >= 5A AC	>= 5A DC & >= 5A AC	>= 5A DC & >= 5A AC
Light Shade technology	No	Yes	Yes	Yes	Yes	Yes
Viewing area (mm <sup>2</sup> )	4 312	4 312	4 559	4 312	8 736	5 820
Grinding mode	External	Internal	External	External	External	External
Digital setting	No	No	Yes	Yes	Yes	Yes
Additional features		Delivered with a planch of stickers	-	Xmode & infotrack	Xmode & infotrack	Xmode & infotrack Flow rates: 2 - from 160l/min to 200l/min Flame retardant material Lithium Battery
Weight (g)	490	475	614	542	668	938g + 1760g
Warranty	12 Months	18 Months	2 Years	2 Years	2 Years	2 Years

**Passive products (handshields and helmets)** would be chosen for punctual or discontinue use. In case of continual welding, **an electronic helmet** is necessary.

Handshields and passive helmets exist for 2 types of applications: **light or heavy duty**.

- ◆ **Light duty:** you will prefer thermoplastic products (*light, low price, flexible*).
- ◆ **Heavy duty:** generally polyester with fibreglass (*heat resistant, spatters resistance*).

The **size of the window** depends on countries habits.





**SEE MORE!  
WELD BETTER!**

## LCD WELDING FILTER

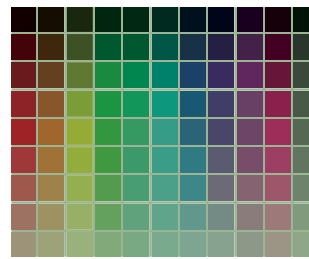
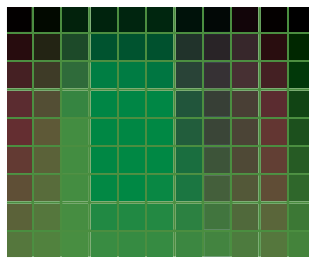
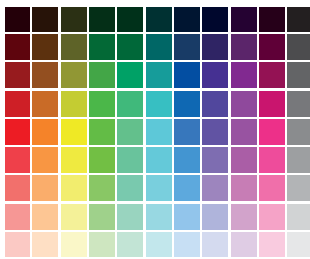
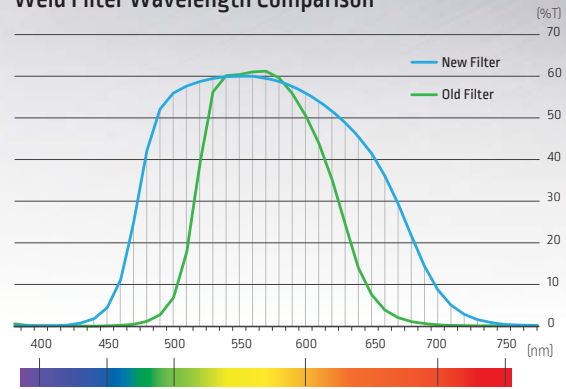


### THE NEW RANGE OF HIGH QUALITY AUTODARKENING HELMETS

#### NEW LIGHT SHADE TECHNOLOGY - NATURAL VISION

- ◆ Natural vision for more comfort for the welders
- ◆ Better color perception for more safety
- ◆ A largest panel color for a clearer vision of the bead and of the environment from shade 3 to 13.

Weld Filter Wavelength Comparison



Light state shade #3

Light state shade #3



Dark state shade #9

Dark state shade #9

#### WELDING FILTER UNAPPLIED

#### OLD WELDING FILTER

Since it needs to be special coated to protect the harmful rays, the penetration ratio is less than the transparent lens and user feels the color as yellow-green.

#### NEW LIGHT SHADE WELDING FILTER

New Welding Filter has function of protection against harmful rays and the penetration ratio is increased so user can recognize the object more brighter

Also the recognizable color is enhanced natural color from current yellow-green.

The lens improved as natural color can make the user recognize the object with ungarbled color so it can reduce feeling of fatigue and improve operation efficiency.

# ELECTRONIC HELMETS

## HEADBAND

With the filter, the headband is one of the main elements that makes an electronic helmet comfortable.

Weldline by Lincoln Electric is always concerned about the user comfort and has developed a series of head bands, that will allow you to combine comfort and ergonomics.

More than a detail, it is the key for comfort and maintenance of the helmet, an essential criteria in choosing your protection.

New comfortable headgear

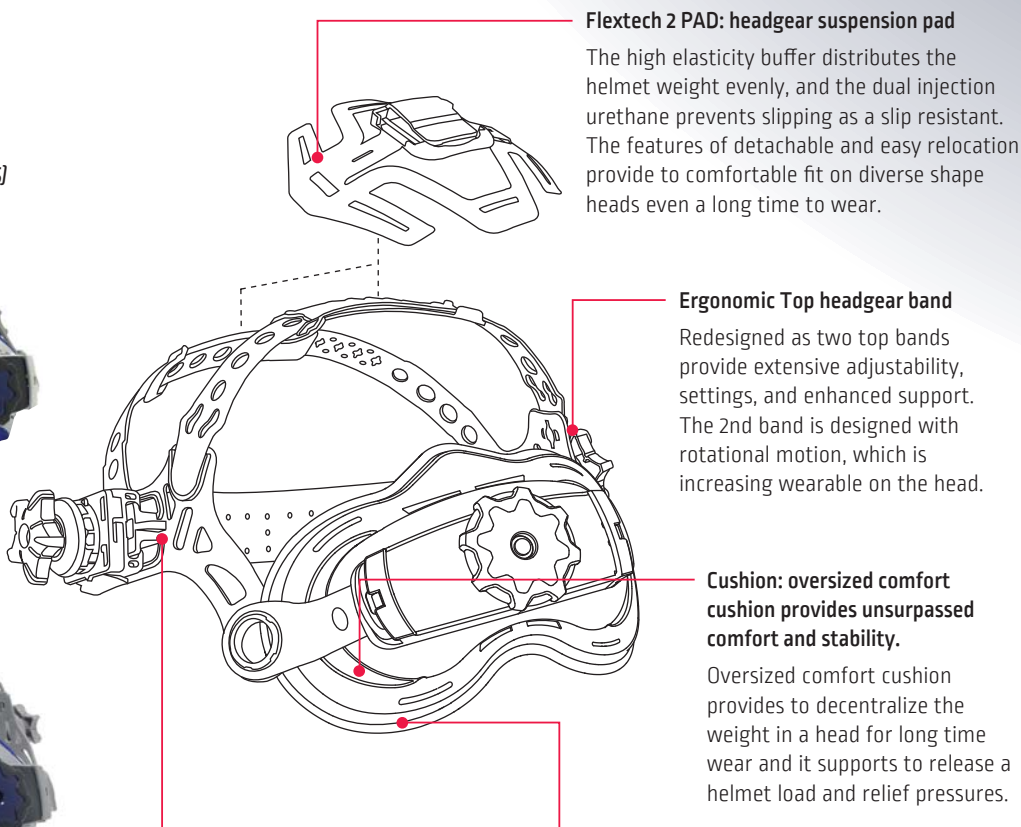
### FLEXTECH 1

(for CHAMELEON 4V+ LS and EUROLUX LS)



### FLEXTECH 2

(for GOLDENARK)



#### Easily detachable and quick adjusting rail function

Distance Adjustment by six level rail systems between the face and the lens.  
Release tabs as one touch.

The high elasticity urethane cushion is made of dual injection, and it gives to reduce not come off easily when wearing on/off a helmet. Also the high Adhesiveness provides to easy fit on various shape head. It transfers the center of gravity towards the back of the head, so to provide a balance with stable fit.

### FLEX ONE

(for EUROONE)



### FLEX SPEED LS

(for EUROSPEED LS)



- 1 Removable sweatband
- 2 Setting on the top
- 3 Rack setting
- 4 Comfort cushion

# ELECTRONIC HELMETS

## EUROONE

All the comfort and security of liquid crystal technology in a protective and comfortable welding helmet.

- ◆ Covering shape for an optimized head protection.
- ◆ External grinding mode.
- ◆ 4 312 mm-Filter view.

### Delivered with:

2 outside protection plates  
and 2 inside protection plates,  
1 sweat band.

WARRANTY

**1**  
YEAR



	EUROONE
Applications	Every welding process; Not for Laser Welding or Oxyacetylene Welding/Cutting
Type cell	Variable shade DIN 3.5/9-13
Optical class	1/1/1/2
Shade	External variable
Cartridge dimensions	110 x 90 x 9 mm
Weight (Filter + shield + head band)	490g
Viewing area	98 x 44 mm
Clear shade	DIN 3.5
Dark shade	Variable from 9 to 13
Switching time clear-dark	1/16000 s
Sensitivity adjustment	Adjust by infinitely dial knob
Switching time dark-clear	0.1-1.0 s by infinitely dial knob
Sensors	2 optical sensors
Grinding mode (shade 4)	External
Power supply	Solar cells, no battery change required
Protection	Permanent protection against UV and IR
<b>To order</b>	
Helmet	W000403823
LCD cell	W000404067

List of spare parts : see page 14



# ELECTRONIC HELMETS

## EUROSPEED LS / CHAMELEON 4V+ LS



All the comfort and security of liquid crystal technology in a protective and comfortable welding helmet.

### EUROSPEED LS

- ◆ Robustness and comfortable shape.
- ◆ Internal grinding mode.
- ◆ Soft and comfortable sweat band.

WARRANTY  
**18**  
MONTH

#### Delivered with:

2 outside protection plates and 1 inside protection plate, and 1 sweat band.  
1 comfort cushion on the headgear apres 1 sweat band.



### CHAMELEON 4V+ LS - Digital setting

- ◆ Covering shape for an optimized head protection.
- ◆ 4 plans adjustable headgear delivered with comfort cushion.
- ◆ Auto-start: the LCD cell automatically turns on.
- ◆ Reset button: press the reset button twice to re-initialize the original parameters.
- ◆ The low battery indicator lights when 2-3 days of battery life remain.

#### Delivered with:

5 outside protection plates and 2 inside protection plates, 1 sweat band and 1 comfort cushion on the headgear.



WARRANTY  
**2**  
YEARS



	EUROSPEED LS	CHAMELEON 4V+ LS
Applications	Every welding process; Not for Laser Welding or Oxyacetylene Welding/Cutting	Every welding process. Recommended for TIG
Type cell	Variable shade DIN 3.5/9 - 13	Variable shade DIN 3/8-13
Optical class	1/1/1/2	
Shade	Internal variable	Variable
Cartridge dimensions	110 x 90 x 9 mm	110 x 90 x 10 mm
Weight (Filter + shield + head band)	475 g	614 g
Viewing area	98 x 44 mm	97 x 60 mm
Clear shade	DIN 3.5	DIN 3
Dark shade	Variable from 9 to 13	Variable from 8 to 13
Switching time clear-dark	1/25000 sec.	1/20000 sec.
Sensitivity adjustment	Adjust by infinitely dial knob	Yes
Switching time dark-clear	0.1-1.0s by infinitely dial knob	Variable from 1 s to 0.1 s
Sensors	2 optical sensors	Sensors 3 independent highly sensible
Grinding mode (shade 4)	External	yes
Power supply	Solar cell + Battery replaceable (2 x AAA Alkaline batteries) Low battery alarm; Test button	2 lithium CR2450 3 Volts batteries + Solar cells
Protection	Permanent protection against UV and IR	Permanent IR-UV filtration
<b>To order</b>		
Helmet	W000403824	W000403668
LCD cell	W000404097	W000402680

List of spare parts : see page 14



Grinding mode  
with external  
button



# ELECTRONIC HELMETS

## EUROLUX LS

Helmet standard  
CE EN 175  
Cell standard  
CE EN 379

PERSONAL PROTECTION  
EQUIPMENT

1



### LCD autodarkening welding helmets

- ◆ High Tech LCD autodarkening filter.
- An extra-wide vision: 5820 mm<sup>2</sup>.

### The advantages of the EUROLUX LS helmet

#### Exclusive design:

- ◆ Easy filter release by simply pressing the push button.
- ◆ Adjustable headgear with 4 positions.

#### Comfort and protection:

- ◆ Covering shape for an optimized head protection.
- ◆ Optimization of the volume for a better breathing comfort.
- ◆ Manufactured with high resistance synthetic material [Nylon 66].
- ◆ Lightweight and heat resistant.
- ◆ The low battery indicator lights when 2-3 days of battery life remain.

#### Delivered with:

5 outside protection plates and 2 inside protection plates, 1 sweat band and 1 comfort cushion on the headgear.



Grinding mode with external button

		EUROLUX LS
Optical class		1 / 1 / 1 / 2
Switching time clear-dark		0.05 ms
Switching time dark-clear		10 positions from 0.1 s to 1 s setting per digital key
Sensitivity adjustment		Setting per digital key (10 positions)
Modes	Welding Grinding Cutting X mode* Infotrack system**	Yes shade 8 to 13 per digital key Yes shade 3 (per external button) Yes shade 5 to 9 per digital key Yes Yes
Sensors		4 independent optical sensors Magnetic in «X» mode
Clear shade		DIN 3
Dark shade		Adjustable from 5 to 13
Viewing area		97 x 60 mm
Constant UV/IR protection		Yes
Battery type		2 lithium CR2450 3 Volts
Solar cell		Yes
Temperature scale	Use Storage	From -5 °C to +55 °C From -30 °C to +70 °C
Weight (Filter + shield + head band)		542 g
Standard	LCD filter Helmet	CE EN 379 CE EN 175

### Filter Advance 4500 LS - Infotrack shade 3/8-13:

#### The top-of-the-range solution for any application:

4 adjustment modes via the LCD screen with digital keys:

- ◆ Welding: variable shades 8-13, 4 optical sensors, sensitivity regulation and return to a clear shade.
- ◆ Grinding: filter activation in clear shade level 3.
- ◆ Cutting, low current welding: adjustable shades 5 to 8 for low intensity TIG process, microplasma, oxy-fuel gas welding...
- ◆ "X mode": adjustable shade 3 to 8-13 with magnetic sensors for outside use or obscured arc welding.

Infotrack system: provides useful information (current time - total welding time - alarm - temperature).

WARRANTY  
**2**  
YEARS

- ◆ Auto-start function: it is not necessary to push the "on" button before starting to weld. Automatic starting.
- ◆ Reset button: press the "reset" button twice to re-initialize the original parameters.
- ◆ Grinding mode: fixed shade 4 is activated, to ensure optimum protection when grinding.



#### To order

Complete helmet	W000403672
LCD filter	W000402681

\* X-mode: this mode allows welding in outdoor conditions or with very low arc current  
\*\* Infotrack system: provides useful information

List of spare parts : see page 14

# ELECTRONIC HELMETS

# GOLDENARK LS

*Think bigger.*

- ◆ **Extra wide field of view:**  
112 x 78 mm
- ◆ **All applications:**  
4 operating modes : Welding, Cutting, Grinding & X-mode.
- ◆ **Multi language help menu**  
Available in English, French and Spanish with InfoTrack system.
- ◆ The low battery indicator lights when 2-3 days of battery life remain.



2016-231



## 150iw - InfoTrack (auto darkening welding lens)



External grinding button



4 optical sensors



**A display function of arc time Control**  
The arc time function records the amount of time the lens assembly is dark (exposed to an arc). Arc time is accumulated and displayed hours and minutes as Max. 99 hours 59 minute.



**A display function of Current time**  
You can access to set a current local time.



**Timer function**  
A time-management function with alarms.



**Multi-language support**  
Help menu displays in Korean and English as default setting (up to 6 languages supportable)



**Alarm function**  
Alarm clock functions to turn on alarm at a specific time.



**Help menu**  
Help menu displays abbreviated instructions, modes, and notes on proper usage.



# ELECTRONIC HELMETS

Better weight distribution on the head.  
Feeling of comfort and maintains more important.



	<b>GOLDENARK LS</b>
Optical class	1/1/2
Viewing area	112 x 78 mm
Switching time clear to dark	0.00005 sec
Switching time dark to clear	Between 0.1 and 1.0 sec
Clear shade	DIN 3
Available shades All shades provide continuous UV and IR protection	- Welding: DIN 8-13 - Cutting: DIN 5-8 - Grinding: DIN 3 - X-mode: DIN 8-13
Color of the cell	Yellow, to help clearing color sorting
Power supply	CR2450 Lithium batteries
Sensors	4 independent
Operating temperature	From -10°C to +55°C
Storage temperature	From -20°C to +70°C
Weight (Filter + shield + head band)	668 g

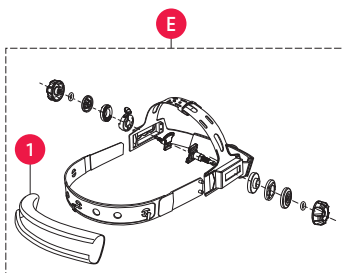
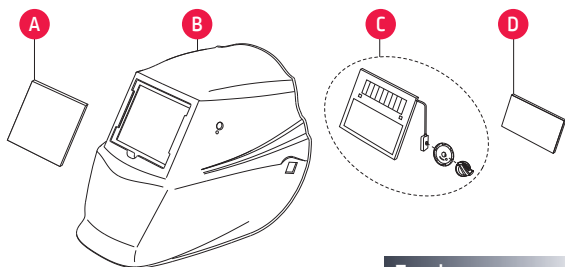
<b>To order</b>	
Electronic welding helmet GOLDENARK	<b>W000402683</b>

List of spare parts : see page 14



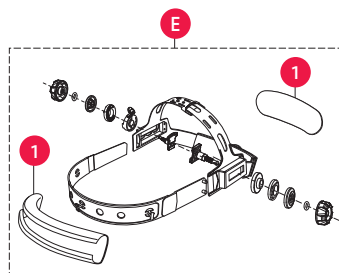
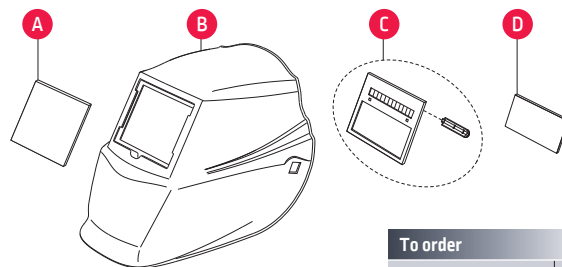
# ELECTRONIC HELMETS

## Spare parts for EUROONE



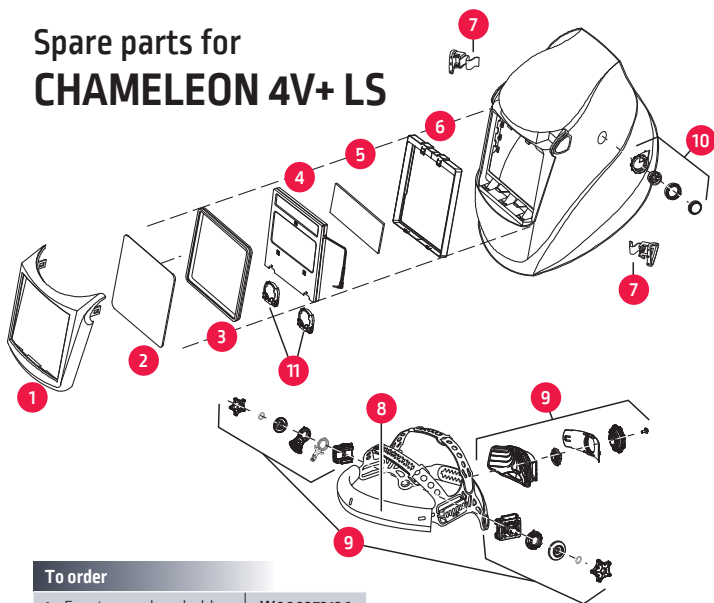
To order	
A - Front Cover Lens	W000404065
B - Shell (Welding Mask)	W000404066
C - Auto-Darkening Filter	W000404067
D - Inside Cover Lens	W000404068
E - Headgear FLEX ONE (including sweatband)	W000404069
1 - Sweatband	W000404073

## Spare parts for EUROSPEED LS



To order	
A - Front Cover Lens	W000404065
B - Shell (Welding Mask)	W000404096
C - Auto-Darkening Filter	W000404097
D - Inside Cover Lens	W000404068
E - Headgear FLEX SPEED LS (including sweatband)	W000404098
1 - Sweatband	W000404073

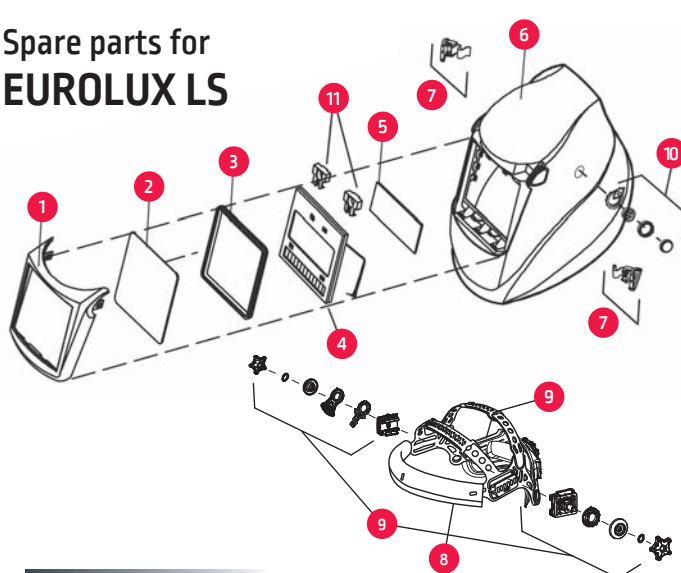
## Spare parts for CHAMELEON 4V+ LS



To order	
1 - Front cover lens holder	W000373136
2 - Front cover lens	W000261993
3 - Gasket front cover lens	W000261992
4 - Cell 4V+	W000402680
5 - Inside cover lens	W000261984
6 - Internal lens holder 4V+	Consult us
7 - Lens holder button (left & right)	W000276258
8 - Sweatband	W000402690

To order	
9 - Headgear FLEXTECH 1 (including sweatband)	W000402692
10 - Outside grinding button kit	Consult us
11 - Spare batteries (CR 2450 lithium)	W000260920

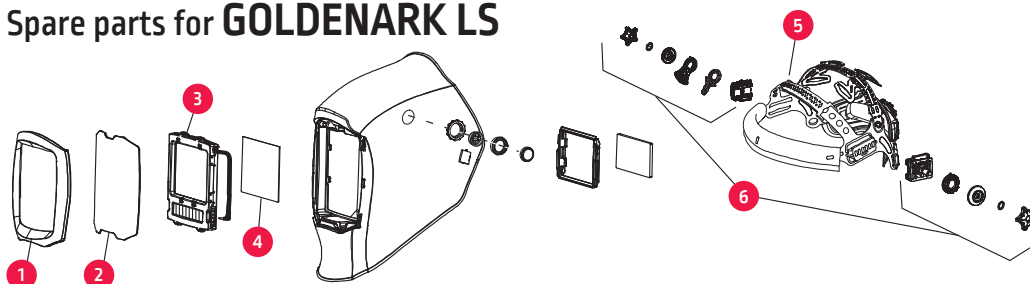
## Spare parts for EUROLUX LS



To order	
1 - Front lens holder	W000272829
2 - Outside lens cover	W000261993
3 - Gasket lens cover	W000261992
4 - Auto-darkening lens Assembly Advance 4500	W000402681
5 - Inside lens cover	W000261994
6 - Helmet Shell	Consult us
7 - Buttons, front lens holder (L/R)	W000276258

To order	
8 - Sweatband	W000402690
9 - Headgear FLEXTECH 1 (including sweatband)	W000402692
10 - Kit external grinding button	Consult us
11 - Spare batteries (CR 2450 lithium)	W000260920

## Spare parts for GOLDENARK LS



To order	
1 - Front cover lens holder	W000386520
2 - Front cover lens	W000386521
3 - LCD autodarkening cell	W000402683
4 - Inside cover lens	W000386528
5 - Sweatband	W000402693
6 - Headgear FLEXTECH 2 (including sweatband)	W000402694



**Pure Stream** is an initiative to help reducing the exposure of welding fumes to the welders.



## PURE STREAM FUME MANAGEMENT IN 3 STEPS

1. Optimization
2. Ventilation & exhaust
3. Safe work practice and PPE

When used properly, the solutions proposed by **LINCOLN ELECTRIC** can significantly reduce the amount of fumes inhaled by welders.



## GLOBAL SOLUTION TO REDUCE THE EXPOSURE TO WELDING FUMES

Where welding operations are concerned, safety is directly connected to air quality. **PURE STREAM** is not only a customized offer but also an initiative to reduce the exposure of welding fumes to the welders.



## ZEPHYR LS CLEANSPACE 2™

Bring fume protection and filtered air directly to the operator in difficult environments and keep it there all day with the **ZEPHYR LS** Powered Air Purifying Respirator or the **CLEANSPACE 2™**.



Contact us for more information.



Helmet standard  
CE EN 175  
Cell standard  
CE EN 379



# ELECTRONIC HELMETS

## ZEPHYR LS / FLIP'AIR LS



**The ultimate welder protection.**  
**Discover a complete solution designed to protect welders in the most effective way.**

With the ZEPHYR LS / FLIP'AIR LS solution, you will find in a rugged carry bag:

- ◆ The ZEPHYR or FLIP'AIR helmet,
- ◆ The ZEPHYR air flow system,
- ◆ A protected hose connection,
- ◆ A shoulder strap,
- ◆ A battery charger,
- ◆ An air flow-meter,
- ◆ One extra filter.

Helmet with powered and filtered airflow



Flip-up LCD filter for grinding



Grinding mode with external button



### Autodarkening LCD filters with wide vision field.

#### Filter Advance 4500 LS - Infotrack shade 3/8-13:

The top-of-the-range solution for any application:

4 adjustment modes from an LCD screen with digital keys:

- ◆ Welding: variable shades 8-13, 4 optical sensors, sensitivity regulation and return to a clear shade.
- ◆ Grinding: filter activation in clear shade level 3 [except on FLIP'AIR with its flip-up front filter].
- ◆ Cutting, low current welding: adjustable shades 5 to 8 for low intensity TIG process, microplasma, oxy-fuel gas welding...
- ◆ "X mode": adjustable shade 3 to 8-13 with magnetic sensors for outside use or obscured arc welding

Infotrack system: provides useful information (current time - total welding time - alarm - temperature).

WARRANTY  
**2**  
YEARS





# ELECTRONIC HELMETS

## The ZEPHYR LS / FLIP'AIR LS air flow system

- ◆ Air flow system: **2 flow rates** (low 160 l/min and high 200 l/min).
- ◆ This equipment includes an indication of the **chosen flow**, an indication of the **battery charge**, and **two alarms** in case of flow insufficiency: **a tone and a vibration**. This is important for the welder who is often in a noisy environment. A specific system **sends the tone through the hose** to bring the sound to the welder.
- ◆ The belt, as well as the shoulder strap, is made in **flame retardant material**.
- ◆ The belt includes a cushion to ensure a high comfort level.
- ◆ **Disconnecting the battery is easy** with only one button to push. It is a **lithium battery with an 8-hour lifetime duration**. A stronger one can be put in place for special cases with **14-hour duration ±5%** (on request). No need to fully discharge the Li-Ion battery before recharging it.
- ◆ Opening the filter is simple by turning a quarter to the left. Two symbols indicate if it is locked or open, this is also indicated inside the filter box.

Inside, 3 kinds of filters can be included.

- ◆ One pre filter against the biggest particles
- ◆ One particle filter against the dust (> 0.3 micron)
- ◆ One carbon filter against the fumes and the odour.

**The whole system is water proofed.**



### Hose connection and hose cap.

The connection between the flow system and the helmet is made via the hose. The connection with the air flow system is water proof. The helmet includes a quick connection allowing flexibility when the welder moves his head. The hose is protected with an outer covering (75% cotton, 25% Kevlar).



### Flow circulation

You can choose between:

- ◆ air flow from the top of the helmet **1**
- ◆ or a lateral flow coming from each side at the mix level **2** (only for ZEPHYR),
- ◆ or a mix of these two solutions. These features ensure excellent welder comfort.



	ZEPHYR LS Advance 4500	FLIP'AIR LS 4500 i
Optical class	1 / 1 / 1 / 2	
Switching time light to dark	0.05 ms	
Switching time dark to light	10 positions from 0.1 s to 1 s (setting per digital key)	
Delay setting	10 positions (setting per digital key)	
Mode	Welding Grinding  Cutting X mode** Infotrack system**	Yes shade 8 to 13 per digital key Yes shade 4 (per external button) - For FLIP'AIR flip-up LCD for grinding Yes shade 5 to 9 per digital key Yes Yes
Sensors	4 independent optical sensors - Magnetic in «X» mode	
Viewing area	97 x 60 mm	
Constant UV/IR protection	Yes	
Battery type	2 lithium CR2450 3 Volts	
Mix power (battery/cell)	Yes	
Temperature scale	Use : -5 °C to +55 °C - Storage : -30 °C to +70 °C	
Weight	938 g (helmet) + 1760 g (air flow system)	
Standard	LCD filter: CE EN 379 - Helmet: CE EN 175	

\* X-mode: this mode allows welding in outdoor conditions or with very low arc current

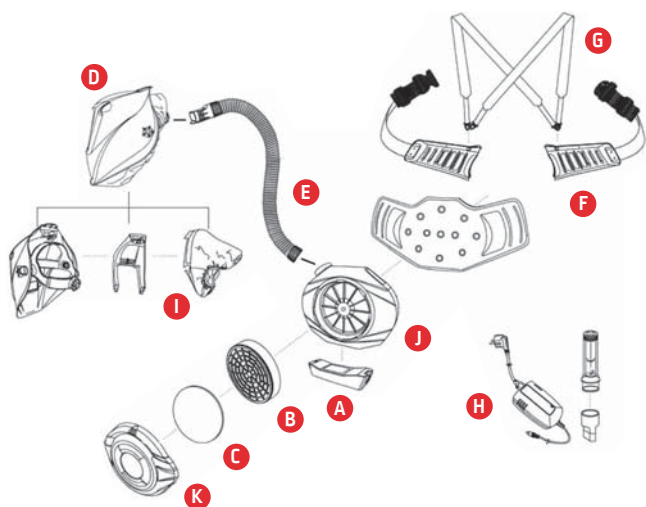
\*\* Infotrack system: provides useful information (current time - total welding time - alarm - temperature)

To order		
Package (helmet + air flow system + LCD filter)	W000403674	W000403675
LCD filter	W000402681	W000402682

List of spare parts : see page 18

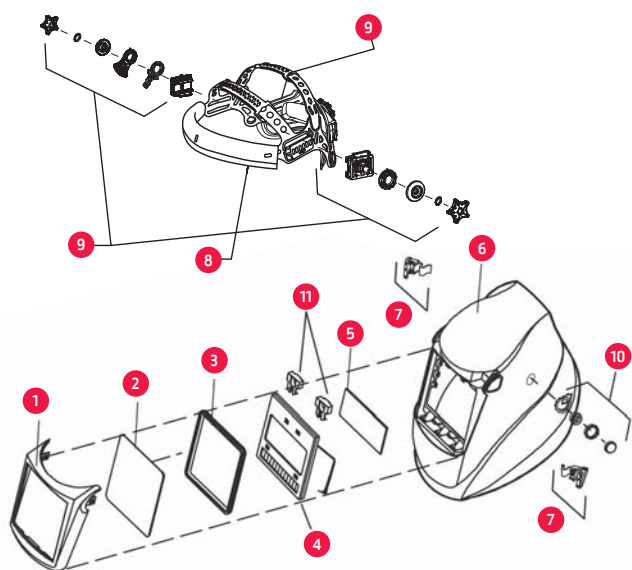
# ELECTRONIC HELMETS

## Spare parts for ZEPHYR LS / FLIP'AIR LS



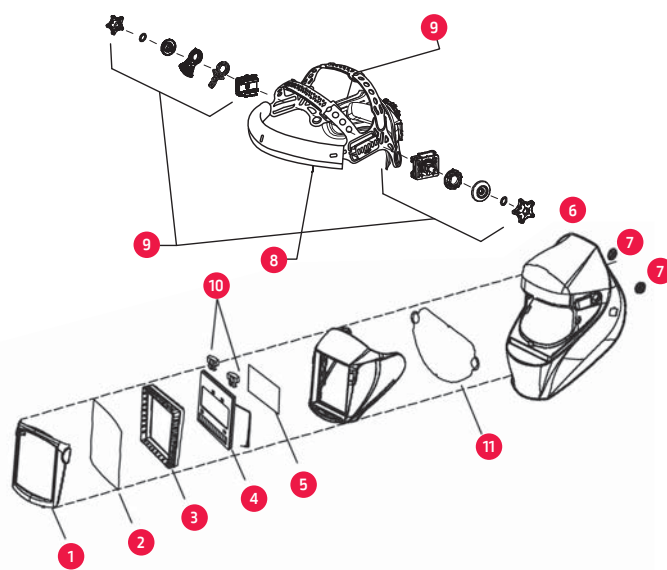
### ZEPHYR LS air flow system

To order		
A	8 hours battery ( $\pm 5\%$ )	W000271210
A	14 hours battery ( $\pm 5\%$ )	W000274379
B	Particle filter P3	W000271208
C	Pre filter	W000271207
	Carbon filter (odours filter)	W000271209
D	ZEPHYR shell without lens	W000271212
E	Hose 110 cm	W000271205
	Hose protective cover	W000271206
F	Comfort belt (size 70 - 113 cm)	W000271203
G	Shoulder strap	W000271204
H	Battery charger	W000271211
I	Green protection ZEPHYR	W000272540
I	Green protection FLIP'AIR	W000382676
J	Motor	W000377929
K	Filter cover	W000378987



### ZEPHYR LS 4500

To order	
1 - Front Lens Holder	W000272829
2 - Outside Lens Cover	W000261993
3 - Gasket, Lens Assembly	W000261992
4 - Auto-darkening Lens Assembly Advance 4500	W000402681
5 - Inside Lens Cover	W000261994
6 - Helmet Shell	On request
7 - Buttons, Front Lens Holder (L/R)	W000276258
8 - Fabric Sweatband	W000402690
9 - Headgear FLEXTECH 1 (including sweatband)	W000402692
10 - Kit external grinding button	On request
11 - Spare batteries (CR 2450 lithium)	W000260920



### FLIP'AIR LS

To order	
1 - Front Lens Holder	W000272829
2 - Outside Lens Cover	W000261993
3 - Gasket, Lens Assembly	W000261992
4 - Auto-darkening Lens Assembly Advance 4500	W000402681
5 - Inside Lens Cover	W000261994
6 - Helmet Shell	On request
7 - Buttons, Front Lens Holder (L/R)	W000276258
8 - Fabric Sweatband	W000402690
9 - Headgear FLEXTECH 1 (including sweatband)	W000402692
10 - Kit external grinding button	On request
11 - Spare batteries (CR 2450 lithium)	W000260920