



BUILDPRO[®]



Welding Tables

2021 Metric Catalog

Welding Tables • Platforms • Fixturing Elements • Mobile Working Stations



StrongHandTools[®]

StrongHandTools.com

562.949.8625

BUILDPRO SYSTEM

BuildPro offers a complete line of heavy-duty and ultra-duty tables for work holding in metal fabrication and woodworking. Our tried and tested system is the fastest method of locating and clamping your workpieces. The system consists of a working surface machined with equally spaced boreholes, allowing you to slip-fit clamps, stops, spacers, and other work holding tools into place.



ALPHA TABLES

The new heavy-duty table line from BuildPro; it features 5 sides fitted with 16mm diameter boreholes for more versatility and expandability than before. Maintaining industry-leading requirements for flatness, squareness, and dimensional accuracy. Also available in ultra-duty 28 mm configurations.



MAX TABLES

Our single-sided heavy-duty tables feature boreholes on the top surface and feature patented self-locating and reversible table top plates. Available in standard and nitrided tabletop finishes.



MAX SLOTTED TABLES

Our slotted, single-sided heavy-duty tables feature open slots between the top plates. Providing extra versatility, allowing you to slide clamping tools or pliers using T-Slot adapters or Sliding Channel on the open slot edges as clamping surfaces. Available in standard and nitrided tabletop finishes.



MOBILE WORKING STATIONS

Get the best of both worlds; the functionality and quality of BuildPro tables with the mobility of a cart. The Rhino Cart and Manipulator feature a replaceable heavy-duty tabletop that accepts all 16mm diameter TM fixturing components - giving you the ultimate, compact mobile working stations.

SET-UP FIXTURES FOR EACH UNIQUE JOB

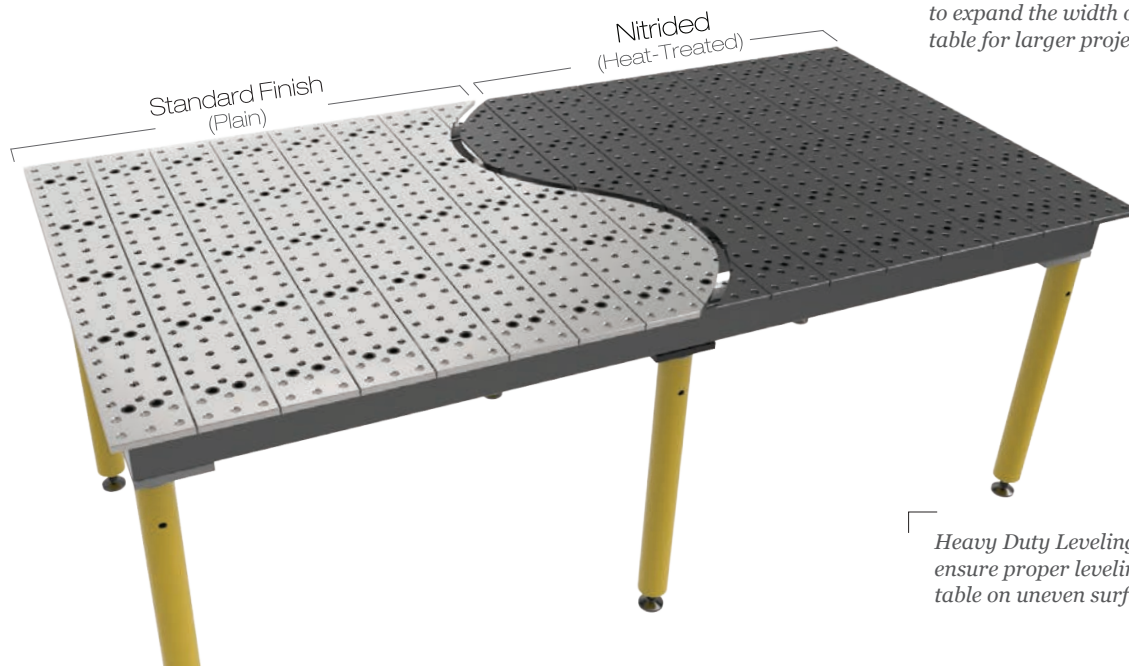
IMPROVE PRODUCTIVITY AND WORK QUALITY

REDUCE PRODUCTION COSTS, LEAD TIMES & SCRAP



Precision ground steel plates, with CNC machined Ø16 mm holes in a 50 mm grid pattern for locating, positioning and mounting BuildPro[®] clamps and accessories.

Plates can be reconfigured to expand the width of the table for larger projects.



Heavy Duty Leveling Feet ensure proper leveling of the table on uneven surfaces.

BuildPro[®] Table Accuracy

- Table flatness: 0.3 mm / 1,000 mm
- Hole diameter: 16 mm $\pm .10$
- Hole spacing: 50 mm ± 0.043
- Plate thickness: 16 mm ± 0.1

Standard (plain) finish - Medium Carbon Steel

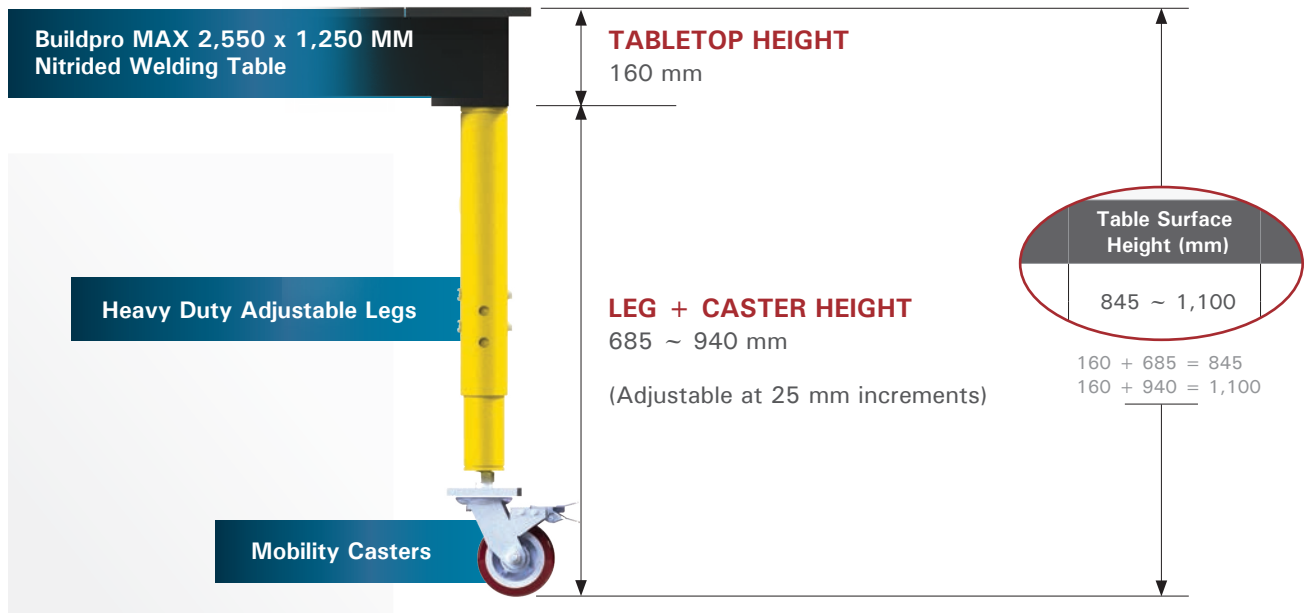
Nitrided (Heat-Treated) Tabletop

The BuildPro[®] is available with a protective nitrided tabletop. The nitriding (heat-treating) process is a mechanical polish and post salt bath oxidative treatment. The benefits of this process include weld spatter resistance and corrosion and wear resistance.

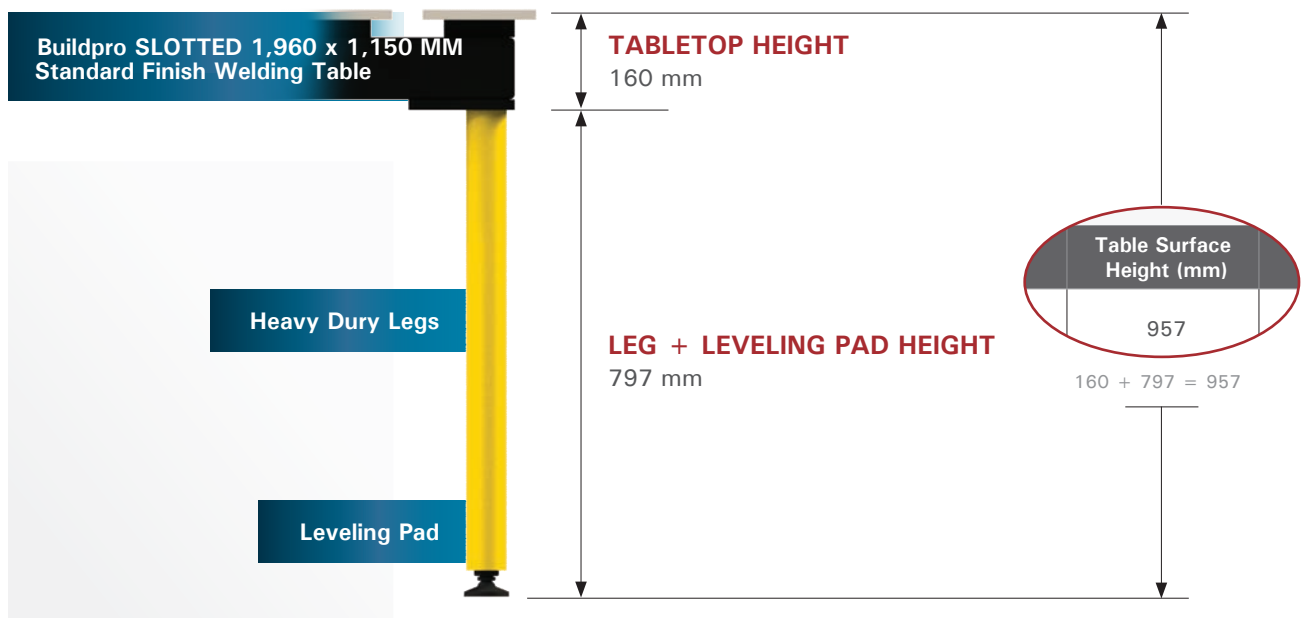
- Surface hardness: HV 550
- Nitriding case depth: 0.01 mm - 0.02 mm
- Coefficient of friction: 0.37

HOW TO CALCULATE "TABLE SURFACE HEIGHT"

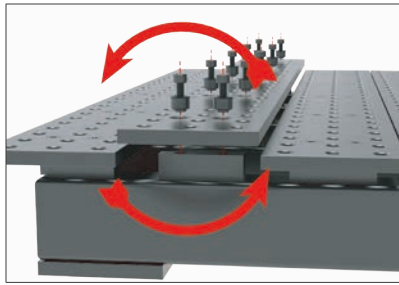
Example: Part No. TMQRC625125V (pg. 10)



Example: Part No. TMA62011SV (pg. 14)

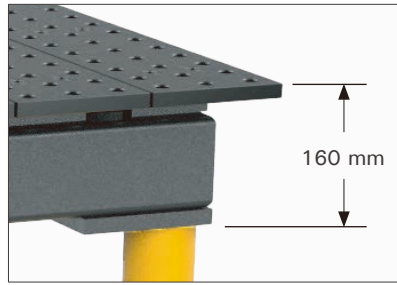


MAX TABLE OVERVIEW



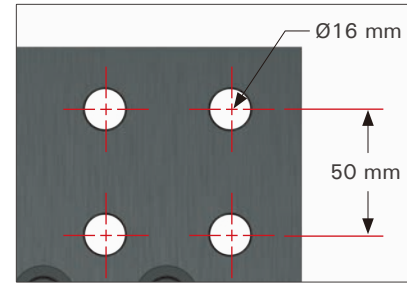
Reversible, Self-Locating Plates

Patented Bushing design allows you to remove, re-position, re-align, and reverse the table plates!



Tabletop Side Height

160 mm for both MAX and MAX Slotted tables



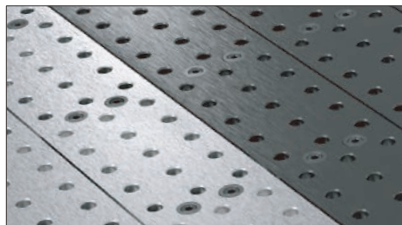
MAX Table Accuracy

Table flatness: 0.3 mm / 1,000 mm
Hole spacing: 50 mm \pm 0.043
Hole diameter: 16 mm \pm .103
Plate thickness: 16 mm \pm 0.06



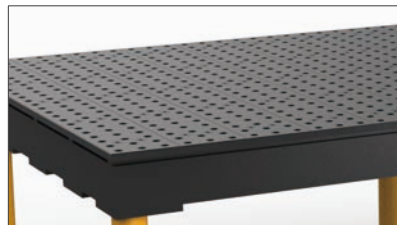
New MAX table sizes available: 1,800 x 1,250 mm & 1,500 x 900 mm

See pg. 14 - 15



Standard (plain) / Nitrided Finish

Choose from standard finish (medium carbon steel) or Nitrided (heat-treating) finish.



MAX Tables

Maximum Table Surface, Maximum Capacity. Utilize the additional holes (33% more than slotted tables) for clamping at multiple points.



MAX Slotted Tables

All slotted tables have 43.18 mm slots between plates.

MAX TABLES

U.S. PAT. 8065967

MAX

TABLE SURFACE DIMENSION: 2,550 X 1,250 MM

**All load capacities below are calculated based on static load.*



Part No.	TMD625125V	TME625125V	TMQD625125V	TMQE625125V
Finish	Standard	Standard	Nitrided	Nitrided
Comes with Leg	6x TML3130	6x TML2530	6x TML3130	6x TML2530
Table Surface Height (mm)	927	777	927	777
Capacity / Leg (kg)	680	680	680	680
Gross Weight (kg)	655	650	655	650



Part No.	TMR625125V	TMQR625125V
Finish	Standard	Nitrided
Comes with Leg	6x TMLR30	6x TMLR30
Table Surface Height (mm)	725 ~ 979	725 ~ 979
Capacity / Leg (kg)	680	680
Gross Weight (kg)	660	660



Part No.	TMRC625125V	TMQRC625125V
Finish	Standard	Nitrided
Comes with Leg	6x TMLC30	6x TMLC30
Table Surface Height (mm)	845 ~ 1,100	845 ~ 1,100
Capacity / Leg (kg)	300	300
Gross Weight (kg)	675	675

MAX, 2,550 X 1,250 MM TABLETOPS



Part No.	Finish	Dimension (mm)	Gross Weight (kg)
TM625125V	Standard	2,550 x 1,250	610
TMQ625125V	Nitrided	2,550 x 1,250	610

INDIVIDUAL PLATES



Part No.	Finish	Dimension (mm)	Weight (kg)	Thickness (mm)
TM620125V-01	Standard	1,250 x 150	21	16
TMQ620125V-01	Nitrided	1,250 x 150	21	

TABLE SURFACE DIMENSION: 1,950 X 1,250 MM

**All load capacities below are calculated based on static load.*



Part No.	TMD620125V	TME620125V	TMQD620125V	TMQE620125V
Finish	Standard	Standard	Nitrided	Nitrided
Comes with Leg	6x TML3130	6x TML2530	6x TML3130	6x TML2530
Table Surface Height (mm)	927	777	927	777
Capacity / Leg (kg)	680	680	680	680
Gross Weight (kg)	490	485	490	485



Part No.	TMR620125V	TMQR620125V
Finish	Standard	Nitrided
Comes with Leg	6x TMLR30	6x TMLR30
Table Surface Height (mm)	725 ~ 979	725 ~ 979
Capacity / Leg (kg)	680	680
Gross Weight (kg)	495	495



Part No.	TMRC620125V	TMQRC620125V
Finish	Standard	Nitrided
Comes with Leg	6x TMLC30	6x TMLC30
Table Surface Height (mm)	845 ~ 1,100	845 ~ 1,100
Capacity / Leg (kg)	300	300
Gross Weight (kg)	515	515

MAX, 1,950 X 1,250 MM TABLETOPS



Part No.	Finish	Dimension (mm)	Gross Weight (kg)
TM620125V	Standard	1,950 x 1,250	460
TMQ620125V	Nitrided	1,950 x 1,250	460

INDIVIDUAL PLATES



Part No.	Finish	Dimension (mm)	Weight (kg)	Thickness (mm)
TM620125V-01	Standard	1,250 x 150	21	16
TMQ620125V-01	Nitrided	1,250 x 150	21	

MAX TABLES

U.S. PAT. 8065967

TABLE SURFACE DIMENSION: 1,800 X 1,250 MM

*All load capacities below are calculated based on static load.



Part No.	TMD618125V	TME618125V	TMQD618125V	TMQE618125V
Finish	Standard	Standard	Nitrided	Nitrided
Comes with Leg	6x TML3130	6x TML2530	6x TML3130	6x TML2530
Table Surface Height (mm)	927	777	927	777
Capacity / Leg (kg)	680	680	680	680
Gross Weight (kg)	475	468	475	468



Part No.	TMR618125V	TMQR618125V
Finish	Standard	Nitrided
Comes with Leg	6x TMLR30	6x TMLR30
Table Surface Height (mm)	725 ~ 979	725 ~ 979
Capacity / Leg (kg)	680	680
Gross Weight (kg)	480	480



Part No.	TMRC618125V	TMQRC618125V
Finish	Standard	Nitrided
Comes with Leg	6x TMLC30	6x TMLC30
Table Surface Height (mm)	845 ~ 1,100	845 ~ 1,100
Capacity / Leg (kg)	300	300
Gross Weight (kg)	495	495

MAX, 1,800 X 1,250 MM TABLETOPS



Part No.	Finish	Dimension (mm)	Gross Weight (kg)
TM618125V	Standard	1,800 x 1,250	435
TMQ618125V	Nitrided	1,800 x 1,250	435

INDIVIDUAL PLATES



Part No.	Finish	Dimension (mm)	Weight (kg)	Thickness (mm)
TM620125V-01	Standard	1,250 x 150	21	16
TMQ620125V-01	Nitrided	1,250 x 150	21	

TABLE SURFACE DIMENSION: 1,200 X 1,200 MM

**All load capacities below are calculated based on static load.*



Part No.	TMD61212V	TME61212V	TMQD61212V	TMQE61212V
Finish	Standard	Standard	Nitrided	Nitrided
Comes with Leg	4x TML3130	4x TML2530	4x TML3130	4x TML2530
Table Surface Height (mm)	927	777	927	777
Capacity / Leg (kg)	680	680	680	680
Gross Weight (kg)	318	312	318	312



Part No.	TMR61212V	TMQR61212V
Finish	Standard	Nitrided
Comes with Leg	4x TMLR30	4x TMLR30
Table Surface Height (mm)	725 ~ 979	725 ~ 979
Capacity / Leg (kg)	680	680
Gross Weight (kg)	321	321



Part No.	TMRC61212V	TMQRC61212V
Finish	Standard	Nitrided
Comes with Leg	4x TMLB1203	4x TMLB1203
Table Surface Height (mm)	845 ~ 1,100	845 ~ 1,100
Capacity / Leg (kg)	300	300
Gross Weight (kg)	332	332



MAX, 1,200 X 1,200 MM TABLETOPS

Part No.	Finish	Dimension (mm)	Gross Weight (kg)
TM61212V	Standard	1,200 x 1,200	290
TMQ61212V	Nitrided	1,200 x 1,200	290



INDIVIDUAL PLATES

Part No.	Finish	Dimension (mm)	Weight (kg)	Thickness (mm)
TM61212V-01	Standard	1,200 x 150	20	16
TMQ61212V-01	Nitrided	1,200 x 150	20	

MAX TABLES

U.S. PAT. 8065967

MAX

TABLE SURFACE DIMENSION: 1,500 X 900 MM

*All load capacities below are calculated based on static load.



Part No.	TMD61509V	TME61509V	TMQD61509V	TMQE61509V
Finish	Standard	Standard	Nitrided	Nitrided
Comes with Leg	6x TML3130	6x TML2530	6x TML3130	6x TML2530
Table Surface Height (mm)	927	777	927	777
Capacity / Leg (kg)	680	680	680	680
Gross Weight (kg)	315	308	315	308



Part No.	TMR61509V	TMQR61509V
Finish	Standard	Nitrided
Comes with Leg	6x TMLR30	6x TMLR30
Table Surface Height (mm)	725 ~ 979	725 ~ 979
Capacity / Leg (kg)	680	680
Gross Weight (kg)	320	320



Part No.	TMRC61509V	TMQRC61509V
Finish	Standard	Nitrided
Comes with Leg	6x TMLC30	6x TMLC30
Table Surface Height (mm)	845 ~ 1,100	845 ~ 1,100
Capacity / Leg (kg)	300	300
Gross Weight (kg)	335	335

MAX, 1,500 X 900 MM TABLETOPS



Part No.	Finish	Dimension (mm)	Gross Weight (kg)
TM61509V	Standard	1,500 x 900	275
TMQ61509V	Nitrided	1,500 x 900	275

INDIVIDUAL PLATES



Part No.	Finish	Dimension (mm)	Weight (kg)	Thickness (kg)
TM615090V-01	Standard	900 x 150	15.5	16
TMQ615090V-01	Nitrided	900 x 150	15.5	